



## O desafio da rega gota a gota enterrada (SDI) para Milho

PORTUGAL 2015  
Ing. Itamar Eshel

**NAANDANJAIN**  
A JAIN IRRIGATION COMPANY

A produção de milho efectua-se a milhares de anos e o seu consumo mundial continua aumentando



**NAANDANJAIN**  
A JAIN IRRIGATION COMPANY

uma vaca nos EUA consome 10 kg. Milho por dia



**NAANDANJAIN**  
A JAIN IRRIGATION COMPANY

as galinhas consomem quase milho puro



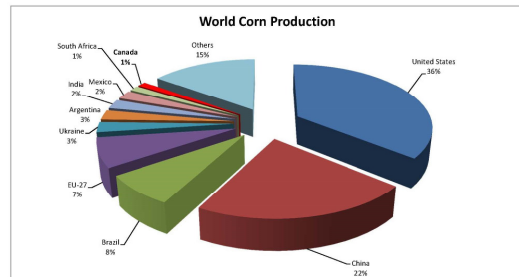
**NAANDANJAIN**  
A JAIN IRRIGATION COMPANY

Para preparar 1 Big Mac é necessário 1 kg. de milho



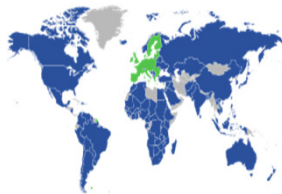
**NAANDANJAIN**  
A JAIN IRRIGATION COMPANY

O consumo mundial é de 700 milhões de toneladas por ano



**NAANDANJAIN**  
A JAIN IRRIGATION COMPANY

Estamos na Europa



**NAANDANJAIN**  
A JAIN IRRIGATION COMPANY

Dispomos de mais de 25 anos de experiencia



**NAANDANJAIN**  
A JAIN IRRIGATION COMPANY

### Economizar agua



**NAANDANJAIN**  
A JAIN IRRIGATION COMPANY

### Evitar evaporação



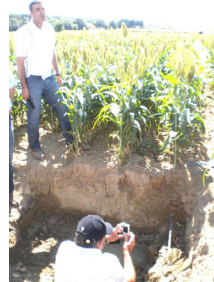
**NAANDANJAIN**  
A JAIN IRRIGATION COMPANY

### Evitar o encharcamento



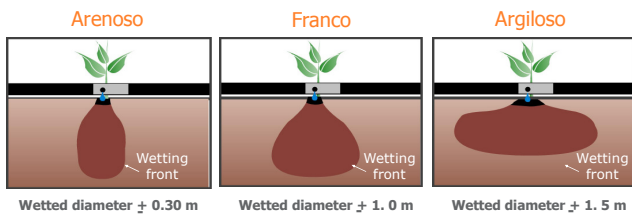
**NAANDANJAIN**  
A JAIN IRRIGATION COMPANY

### Directamente nas Raízes



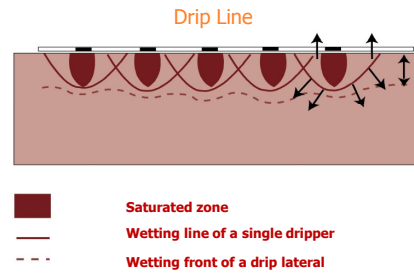
**NAANDANJAIN**  
A JAIN IRRIGATION COMPANY

### Tipo de solos e comportamento da rega gota a gota



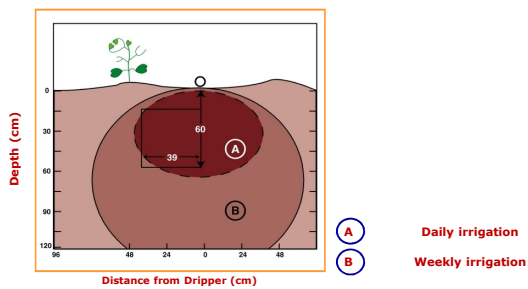
**NAANDANJAIN**  
A JAIN IRRIGATION COMPANY

### Perfil de solo na lateral da gota a gota



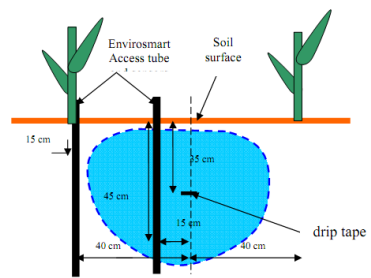
**NAANDANJAIN**  
A JAIN IRRIGATION COMPANY

### Distribuição da água no gotejador

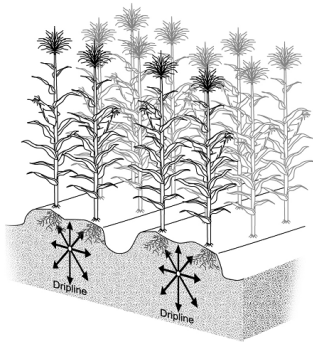


**NAANDANJAIN**  
A JAIN IRRIGATION COMPANY

### Posição da lateral



**NAANDANJAIN**  
A JAIN IRRIGATION COMPANY



**NAANDANJAIN**  
A JAIN IRRIGATION COMPANY



**NAANDANJAIN**  
A JAIN IRRIGATION COMPANY

### Economizar fertilizantes



**NAANDANJAIN**  
A JAIN IRRIGATION COMPANY

### Economizar energía



4 < P < 6



3 < P < 5



1 < P < 2

**NAANDANJAIN**  
A JAIN IRRIGATION COMPANY

### Aproveitar 100% do terreno



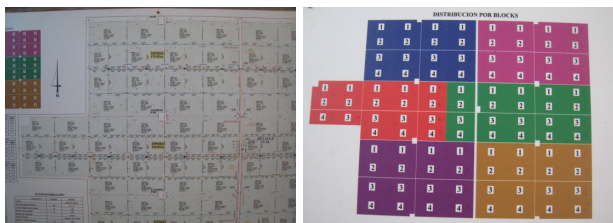
**NAANDANJAIN**  
A JAIN IRRIGATION COMPANY

### Conclusão: trabalhar com equipamentos de alta tecnologia



**NAANDANJAIN**  
A JAIN IRRIGATION COMPANY

### Desenho pratico baseado na analise de solos

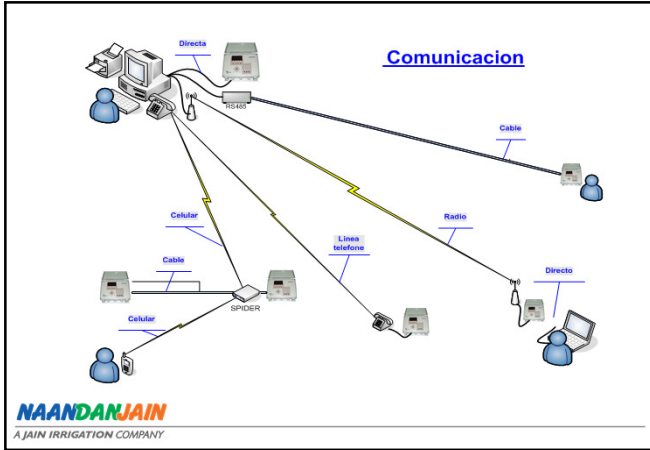


**NAANDANJAIN**  
A JAIN IRRIGATION COMPANY

### Automatizacão para poder regar 24/7 (diariamente e em permanencia)



**NAANDANJAIN**  
A JAIN IRRIGATION COMPANY



## Máquinas e equipamentos para enterrar o tubo gota a gota



**NAANDANJAIN**  
A JAIN IRRIGATION COMPANY

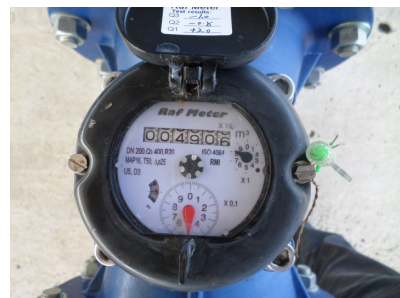


**NAANDANJAIN**  
A JAIN IRRIGATION COMPANY



**NAANDANJAIN**  
A JAIN IRRIGATION COMPANY

## Caudalímetro



**NAANDANJAIN**  
A JAIN IRRIGATION COMPANY

## Ventosas



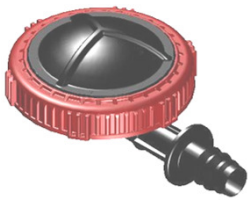
**NAANDANJAIN**  
A JAIN IRRIGATION COMPANY

## Filtros automáticos



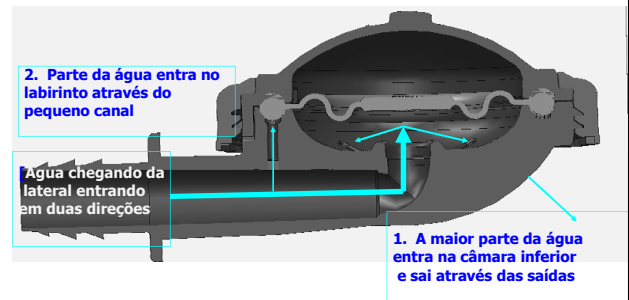
**NAANDANJAIN**  
A JAIN IRRIGATION COMPANY

## Válvulas de limpeza



**NAANDANJAIN**  
A JAIN IRRIGATION COMPANY

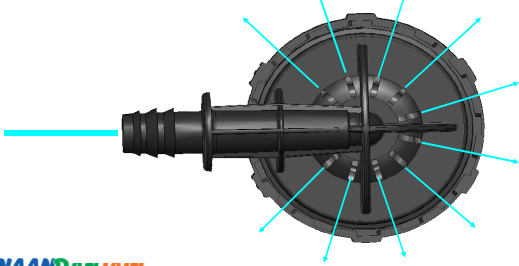
## Como funciona?



**NAANDANJAIN**  
A JAIN IRRIGATION COMPANY

### Como funciona?

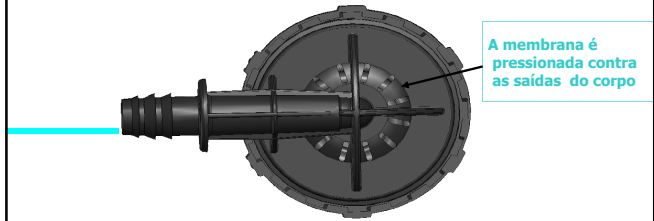
A água da câmara inferior é descarregada através das saídas localizadas no corpo. Desta forma a lateral é lavada.



**NAANDANJAIN**  
A JAIN IRRIGATION COMPANY

### Como funciona?

Quando a câmara está completamente cheia, a membrana é pressionada contra as saídas do corpo e a lavagem é finalizada.



A membrana é pressionada contra as saídas do corpo

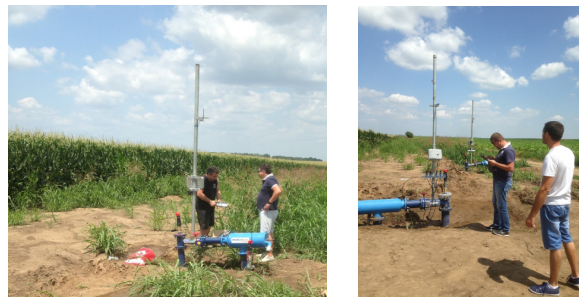
**NAANDANJAIN**  
A JAIN IRRIGATION COMPANY

### Tratores munidos com GPS



**NAANDANJAIN**  
A JAIN IRRIGATION COMPANY

### Operadores dos sistemas com capacidade de aprendizagem



**NAANDANJAIN**  
A JAIN IRRIGATION COMPANY

